



December 2018 Letting Report

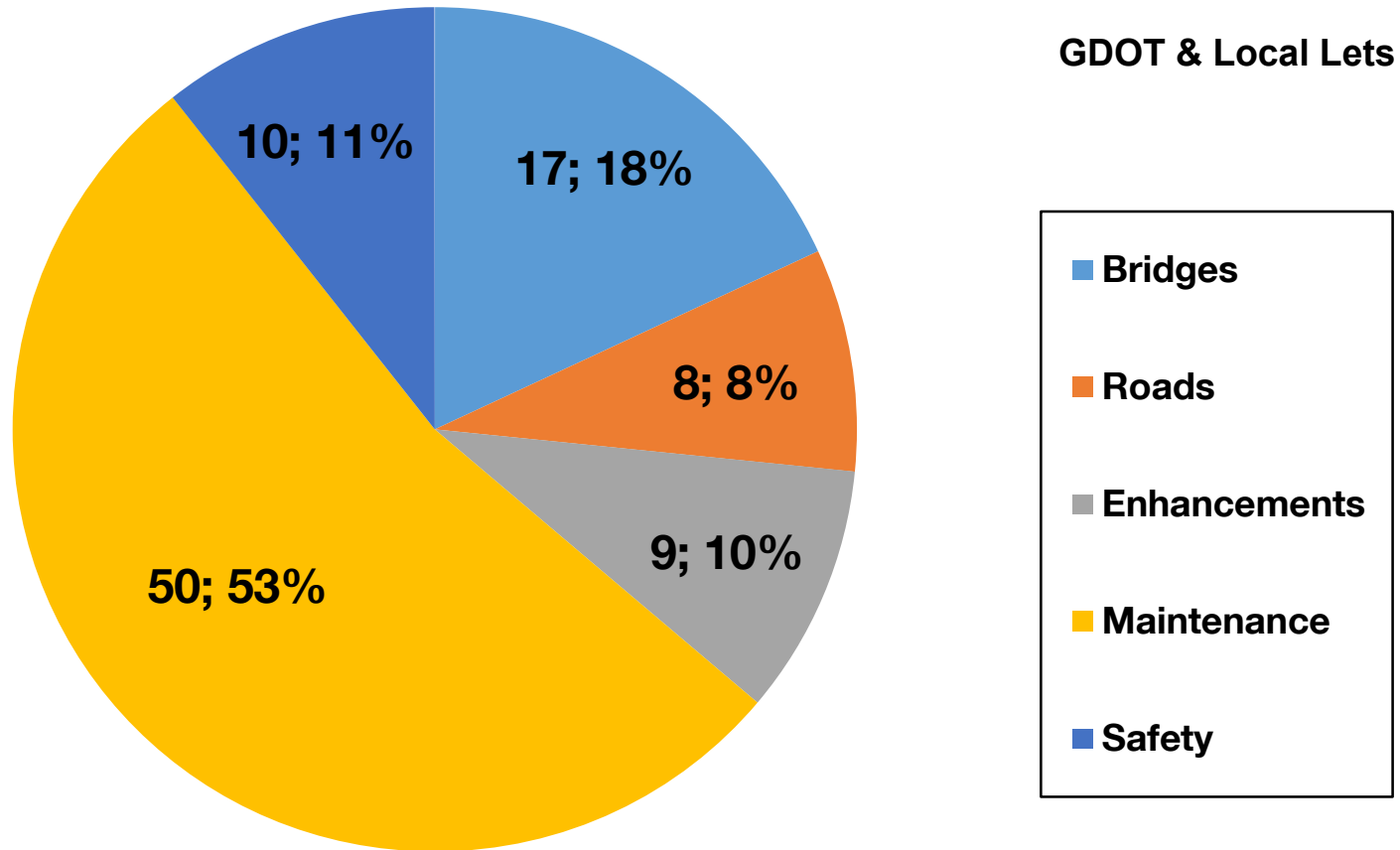
Albert V. Shelby, III
Director of Program Delivery
November 15, 2018



Fiscal Year 2019 Letting Report

Number of Projects Let in FY 2019

(Contractor Low Bid Award Data)



Total = 94

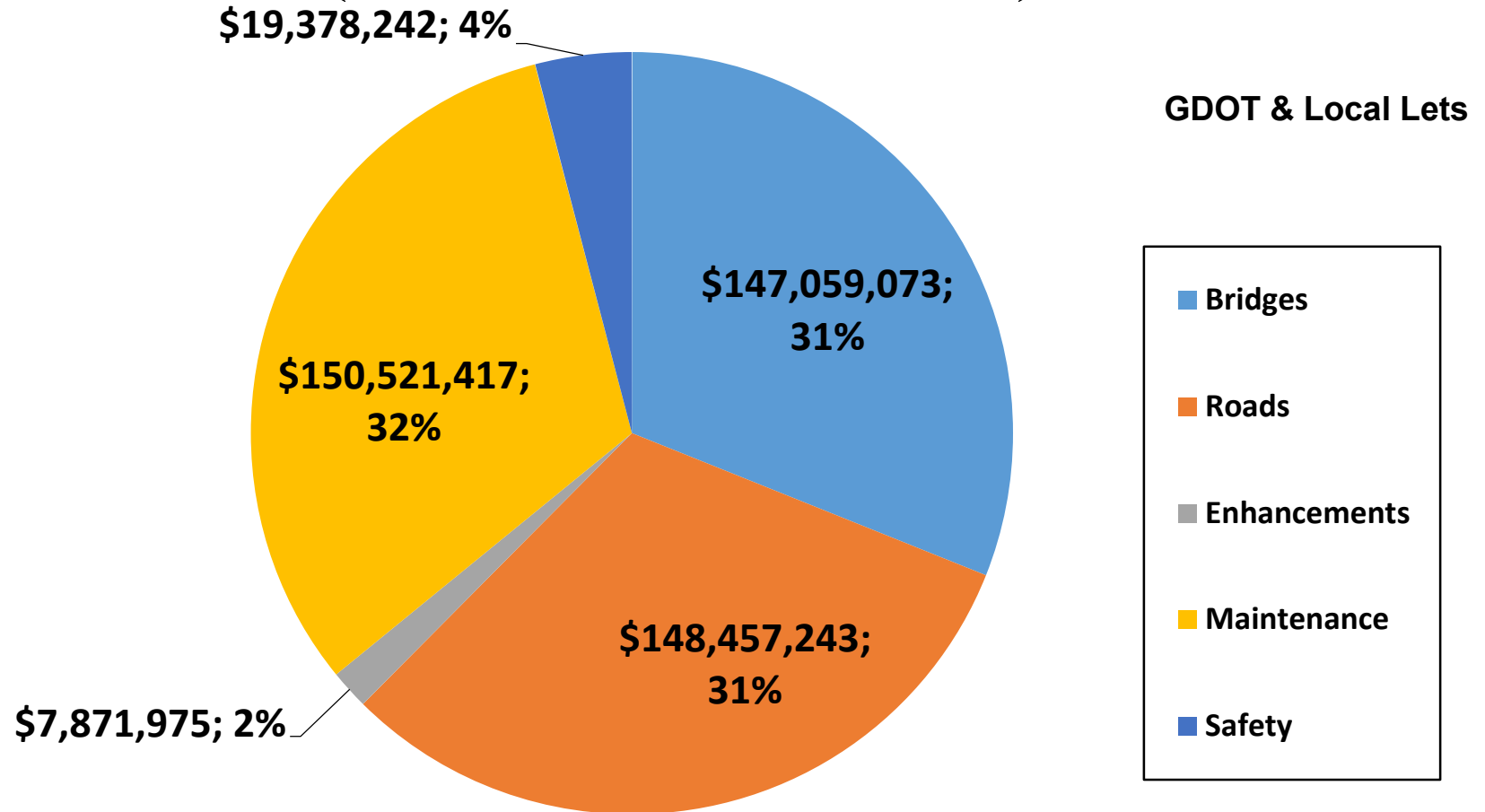
Does not include LMIG Projects

*As of November 5, 2018
Source Bidding Administration*

Fiscal Year 2019 Letting Report

Dollar Amount of Projects Let in FY 2019

(Contractor Low Bid Award Data)



Does not include LMIG Projects

Total = \$473,287,950

*As of November 5, 2018
Source Bidding Administration*

October 2018 Letting Results

Summary	Presented to GDOT Board (Includes Adjustments)	Low Bid (Awarded to Contractor)	Low Bid w/Adjustments (Total Project Obligation)
GDOT Let (Project Count)	9	8	8
GDOT Let (Dollars)	\$105,189,136	\$84,085,263	\$84,941,322
Local Let (Project Count)	5	N/A Local Let	N/A Local Let
Local Let (Dollars)	\$10,514,006	N/A Local Let	N/A Local Let

*Low Bid Award Amount includes the Deferred and Awarded projects.
Does not include Engineering and Inspection, Utilities, Liquid AC, Incentives, LMIG and Rejected projects.

GDOT and Local Let Projects

December 2018 Letting

GDOT and Local Let Projects

December 2018 Letting

Project ID	Description	Primary County	Primary Work Type	Congressional District	Project Let By	Project Sponsor
M004721	SR 25/US 17 @ SIDNEY LANIER - BRIDGE REHAB	Glynn	Bridges	001	DOT	GDOT
M005347	SR 94 FROM FLORIDA STATE LINE TO FLORIDA STATE LINE	Charlton	Resurface & Maintenance	001	DOT	GDOT
M005767	SR 204 FROM 0.02 MI E OF CS 1143/STEPHENSON AVE TO SR 26	Chatham	Resurface & Maintenance	001	DOT	GDOT
M005769	SR 26 FROM BULLOCH COUNTY LINE TO OGEECHEE RIVER	Bryan	Resurface & Maintenance	001	DOT	GDOT
M005339	SR 42 FROM PEACH COUNTY LINE TO SR 22	Crawford	Resurface & Maintenance	002	DOT	GDOT
M004921	I-85 FROM ALABAMA STATE LINE TO SR 219	Troup	Resurface & Maintenance	003	DOT	GDOT
M004959	SR 155 FROM JONESBORO ROAD TO DEKALB COUNTY LINE	Henry	Resurface & Maintenance	003, 004, 010, 013	DOT	GDOT
M005931	I-75 SB FROM SR 36 TO SR 155	Henry	Resurface & Maintenance	003, 010	DOT	GDOT
0007174	SR 3 @ PEACHTREE CREEK	Fulton	Bridges	005	DOT	GDOT
0010323	SR 260 @ SR 42/US 23 - LCI	DeKalb	Realignment	005	LOC	Atlanta

GDOT and Local Let Projects

December 2018 Letting

Project ID	Description	Primary County	Primary Work Type	Congressional District	Project Let By	Project Sponsor
0012819	SR 42 @ 5 LOCS IN DEKALB & @ 7 LOCS IN FULTON	Fulton	Signals	005	DOT	GDOT
0012634	ROAD SIGN REPLACEMENT PROGRAM IN EAST POINT	Fulton	Signing	005, 013	LOC	East Point
0010678	CR 53/SHILOH; CR 458/MCFARLAND & CR 953/SHILOH EAST @ 3 LOCS	Forsyth	TE-Bike/Ped Facility	007	LOC	Forsyth County
M005865	SR 124 FROM SR 20/GWINNETT TO SR 53/JACKSON	Gwinnett	Resurface & Maintenance	007, 009, 010	DOT	GDOT
0007176	SR 82 SPUR @ NORTH OCONNOR RIVER 6.8 MI NORTH OF JEFFERSON	Jackson	Bridges	009	DOT	GDOT
M005735	SR 17 FROM N OF CR 160/FAIRFAX CIRCLE TO W OF SR 72	Elbert	Resurface & Maintenance	009	DOT	GDOT
M005065	SR 24 FROM N OF MILLEDGEVILLE ROAD TO S OF REIDS ROAD	Putnam	Resurface & Maintenance	010	DOT	GDOT
0006862	SR 92 FROM SR 3/US 41 TO GLADE ROAD	Cobb	Widening	011	DOT	GDOT
731865-	SR 92 @ PROCTOR CREEK/LAKE ACWORTH IN SW ACWORTH	Cobb	Bridges	011	DOT	GDOT

GDOT and Local Let Projects

December 2018 Letting

Project ID	Description	Primary County	Primary Work Type	Congressional District	Project Let By	Project Sponsor
M005803	SR 280 FROM SR 5 TO I-75 NB OFF RAMP	Cobb	Resurface & Maintenance	011	DOT	GDOT
M005699	I-20 @ 6 LOCS IN DOUGLAS COUNTY - BRIDGE REHAB	Douglas	Bridges	013	DOT	GDOT
M005728	SR 1 NB @ SR 20 WB & SR 8 @ TALLAPOOSA RIVER - BRIDGE REHAB	Floyd	Bridges	014	DOT	GDOT
M005788	SR 52 FROM WHITFIELD COUNTY LINE TO SR 2/US 411	Murray	Resurface & Maintenance	014	DOT	GDOT
M005815	SR 3 @ 3 LOCS & I-75 @ 1 LOC - BRIDGE PRESERVATION	Whitfield	Bridges	014	DOT	GDOT

SR 25/US 17 @ SIDNEY LANIER - BRIDGE REHAB

Bridge Maintenance Project in Glynn County

Congressional District 1



SR 25/US 17 @ SIDNEY LANIER - BRIDGE REHAB
Bridge Maintenance Project in Glynn County
Congressional District 1 (Continued)



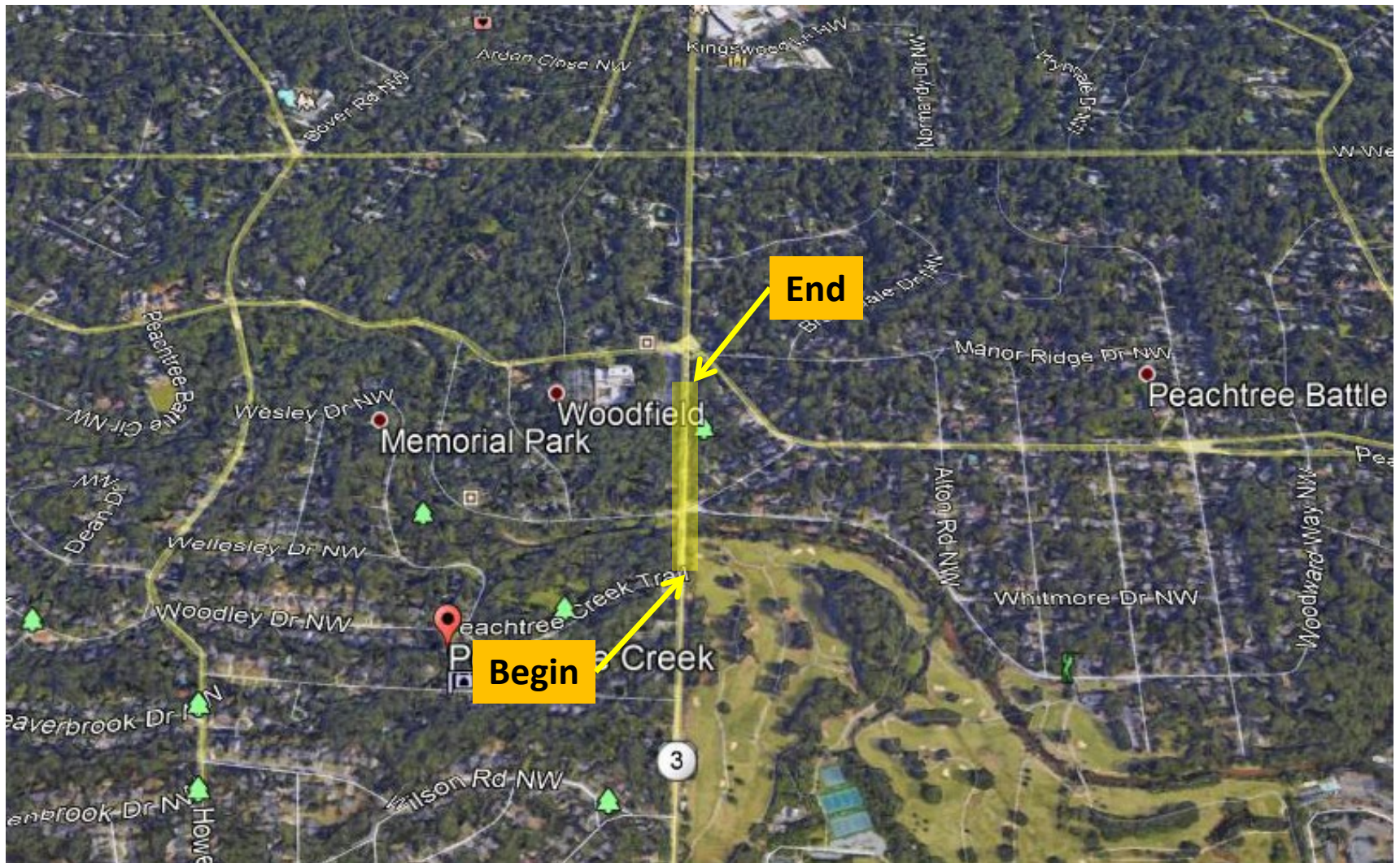
I-85 FROM ALABAMA STATE LINE TO SR 219 Maintenance Project in Harris and Troup Counties Congressional District 3



SR 3 @ PEACHTREE CREEK

Bridge Replacement Project in Fulton County

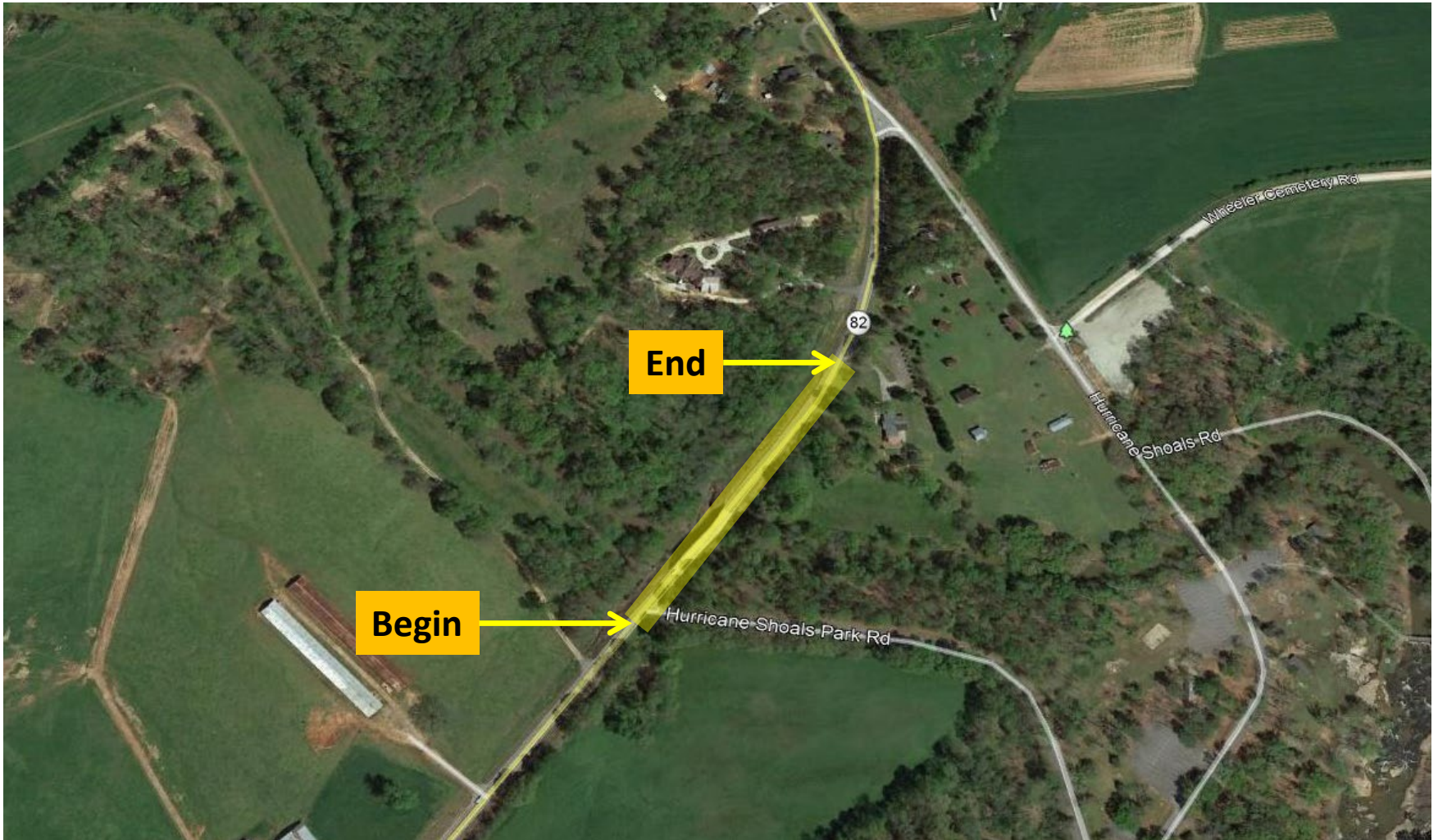
Congressional District 5



SR 3 @ PEACHTREE CREEK
Bridge Replacement Project in Fulton County
Congressional District 5 (Continued)



SR 82 SPUR @ NORTH OCONNEE RIVER 6.8 MI NORTH OF JEFFERSON
Bridge Replacement Project in Jackson County
Congressional District 9



SR 82 SPUR @ NORTH OCONNEE RIVER 6.8 MI NORTH OF JEFFERSON
Bridge Replacement Project in Jackson County
Congressional District 9 (Continued)



SR 92 FROM SR 3/US 41 TO GLADE ROAD

Widening Project in Cobb County

Congressional District 11



SR 92 @ PROCTOR CREEK/LAKE ACWORTH IN SW ACWORTH

Bridge Replacement Project in Cobb County

Congressional District 11



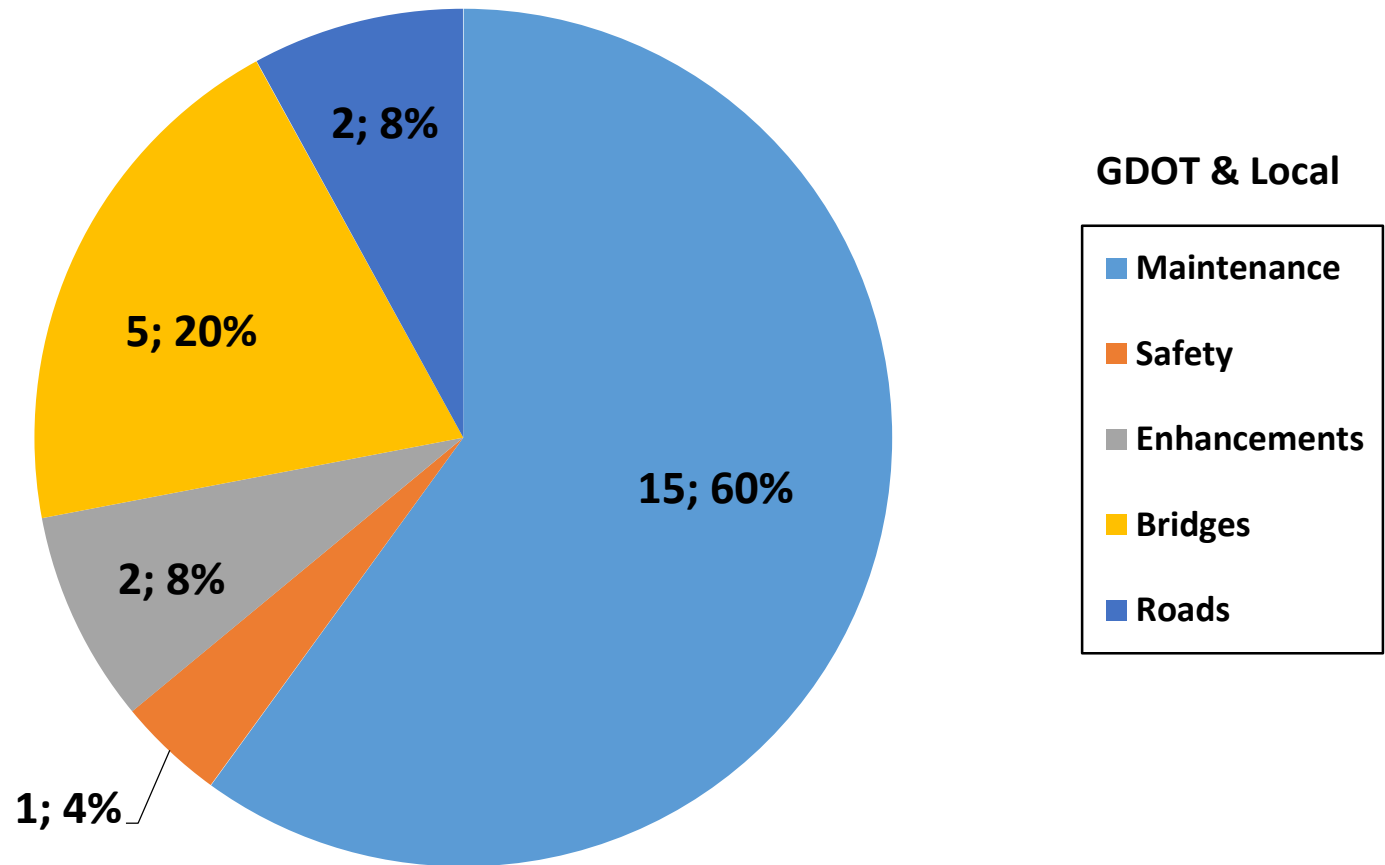
SR 92 @ PROCTOR CREEK/LAKE ACWORTH IN SW ACWORTH
Bridge Project in Cobb County
Congressional District 11 (Continued)



Fiscal Year 2019 Letting Report

Number of Projects

December 2018 Letting



Total = 25

Does not include LMIG Projects

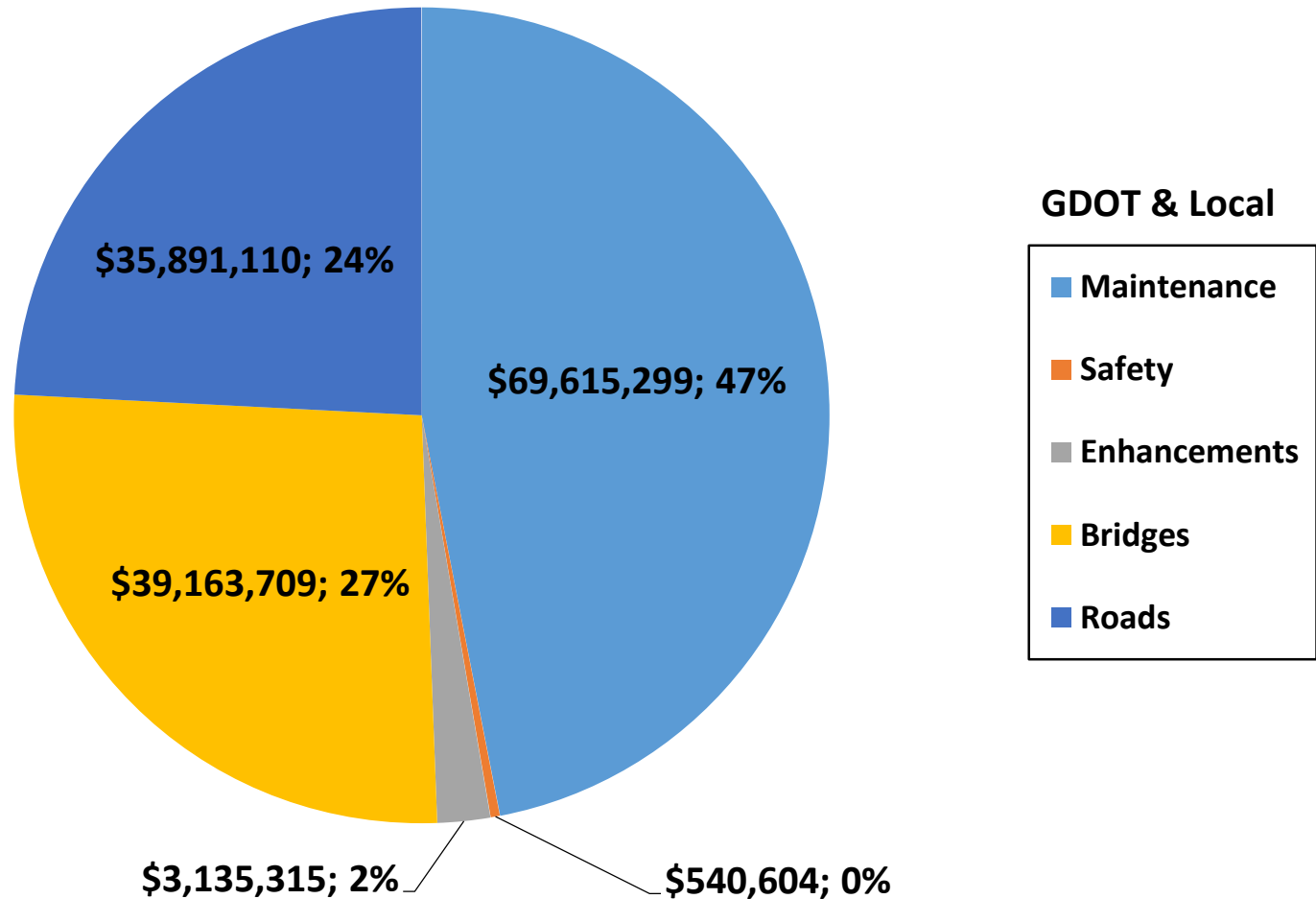
As of November 8, 2018

Source TPro – Chief Approved FY '19 Letting List

Fiscal Year 2019 Letting Report

Dollar Amount of Projects

December 2018 Letting

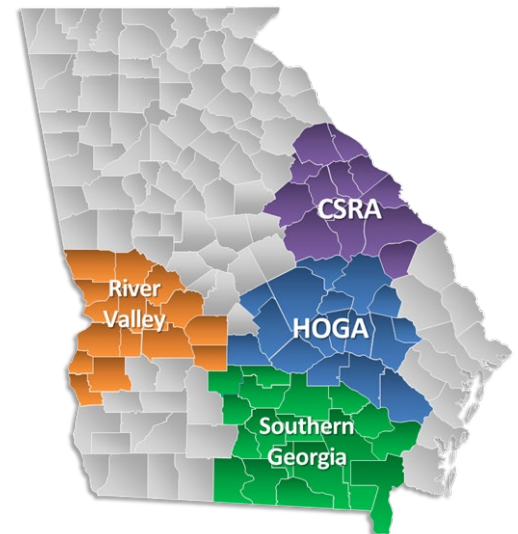


Does not include LMIG Projects

Total = \$148,346,037

December 2018 Letting Proposed TIA Projects

Kenneth Franks
State TIA Administrator
November 15, 2018



TIA Projects

December 2018 Letting

Project ID	Description	Primary County	Primary Work Type	Congressional District	Project Let By	TIA Region
0011439	CR 12/DISTRICT LINE RD FM SR 30 TO SR 49; INC NEW LOC - TIA	SUMTER	Roadway Project	2	DOT	River Valley

CR 12/DISTRICT LINE RD FM SR 30 TO SR 49; INC NEW LOC – TIA
Roadway Project in Sumter County
Congressional District 2



Board Approval